



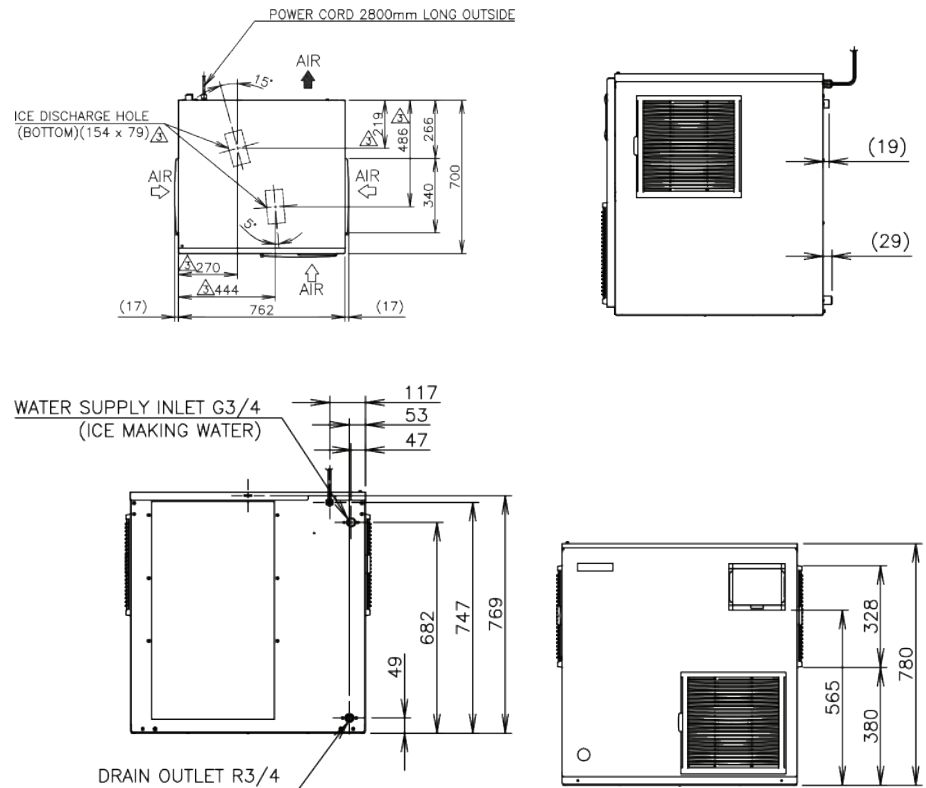
## PRODUCT FEATURES

- "Freeze Burn" is no longer an issue when displaying fresh fish or produce.
- Carbon auger bearings have a longer life expectancy than roller bearing, reducing maintenance costs.
- Automatic flush function, helps keep the ice making system clean.
- Controller board with Operational Status display assists in trouble shooting.
- Due to the auger system, water consumption is equal to ice production.
- Can be converted to Nugget ice by changing the extruding head and cutter (parts at an additional cost).
- 2 year parts & labour on entire unit, 5 year (parts only) on compressor & air cooled condenser coil.

### SHAPE OF ICE:



## TECHNICAL DRAWING



## PRODUCT SPECIFICATION

<b>Production Capacity per 24hours</b>	Approx. 1030kg @10°C Air temp; 10°C Water Approx. 890kg @ 21°C Air temp; 15°C Water Approx. 740kg @ 32°C Air temp; 21°C Water
<b>Max Storage Capacity</b>	Not Applicable
<b>Dimensions</b>	762mm (W) x 700mm (D) x 780mm (H)
<b>Cooling</b>	Air
<b>Weight Net/Gross (kg)</b>	146 / 156
<b>AC Supply Voltage</b>	1 PHASE 220-240V 50Hz
<b>Amperage</b>	Running: 12.5A Starting: 76A
<b>Refrigerant Charge</b>	R404A
<b>Operating Conditions</b>	Ambient Temp.: 5-40°C Water Supply Temp.: 5-35°C Water Supply Pressure: 0.05-0.8MPa (0.5-8bar) Voltage Range: Rated Voltage ±10%



Descriptions and specifications are subject to change at any time, without notice. Illustrations for demonstration purposes.

Copyright © 2019 Hoshizaki Lancer Pty Ltd. All right reserved. E&OE Date: May 2019